

Multiple Decoupling/Blocking Capacitors in a Single Array

Bar Cap®

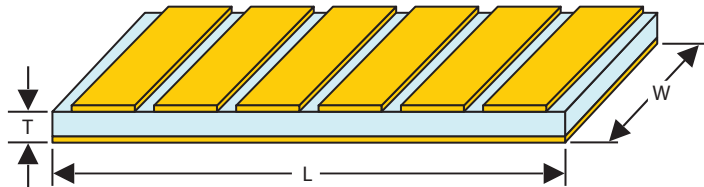
Bar Caps are specifically designed for MMIC circuits requiring multiple capacitor applications, such as Multiple Decoupling or RF Bypassing Networks. Multiple capacitor array devices have become an integral circuit component due to their High Q and low inductance.

Functional Applications:

Decoupling, DC Blocking for GaAs IC's, RF Bypassing.

Benefits:

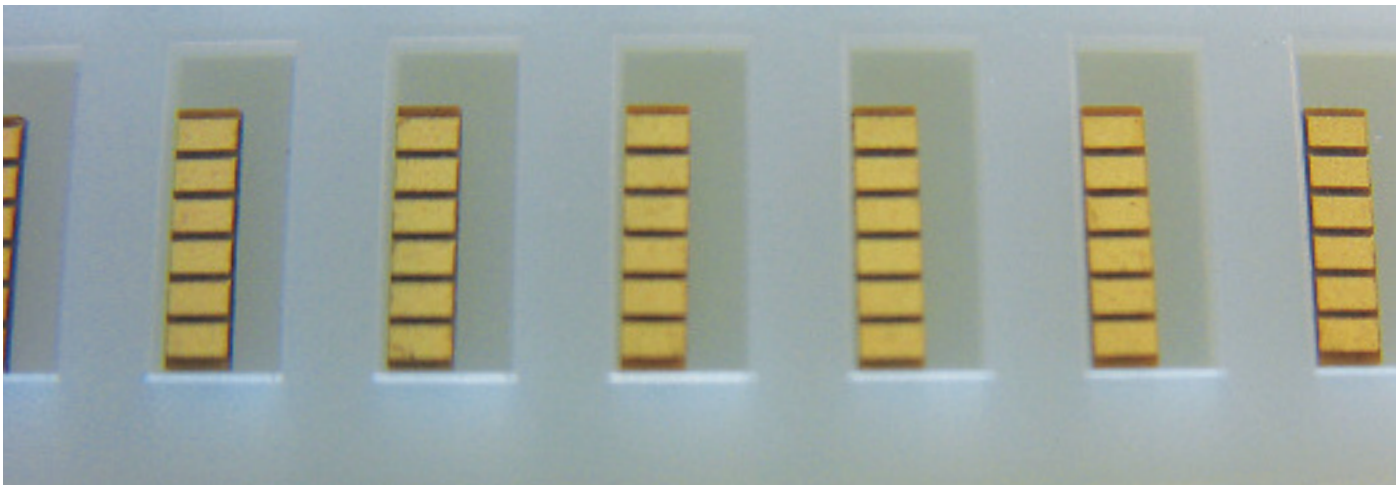
- Can be integrated into IC package to reduce bond wire lengths and improve performance
- Single insertion reduces complexity and costs
- Simplified assembly



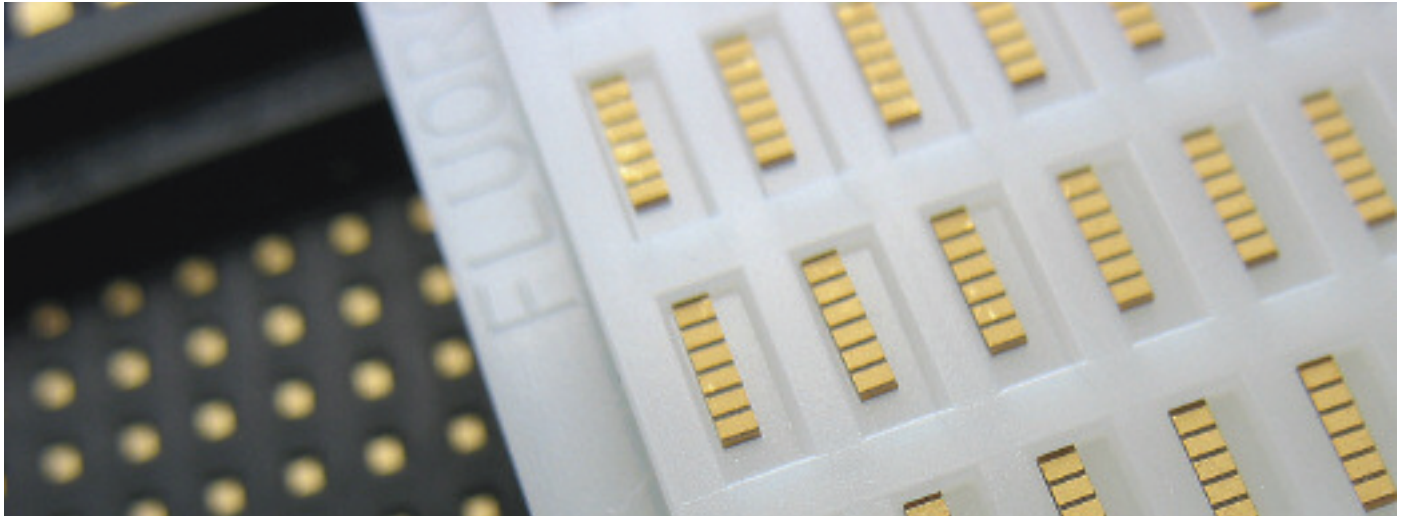
Bar Cap® Dimensions and Part Numbers

Part Number	Number Of Caps	Value Of Each Cap (pF)	W Width		L Length		Pad Size		T Thickness	
			Inches (± 0.003)	mm (± 0.076)	Inches (± 0.005)	mm (± 0.127)	Inches (Nom)	mm (Nom)	Inches (± 0.001)	mm (± 0.025)
E20BU800Z1PX3	3	80	0.02	0.508	0.065	1.651	0.02	0.508	0.007	0.178
E20BU800Z1PX4	4	80	0.02	0.508	0.085	2.159	0.02	0.508	0.007	0.178
E20BU800Z1PX6	6	80	0.02	0.508	0.125	3.175	0.02	0.508	0.007	0.178
E25BU101Z1PX3	3	100	0.025	0.635	0.065	1.651	0.025	0.635	0.007	0.178
E25BU101Z1PX4	4	100	0.025	0.635	0.085	2.159	0.025	0.635	0.007	0.178
E25BU101Z1PX6	6	100	0.025	0.635	0.125	3.175	0.025	0.635	0.007	0.178
E30BU121Z1PX3	3	120	0.03	0.762	0.065	1.651	0.03	0.762	0.007	0.178
E30BU121Z1PX4	4	120	0.03	0.762	0.085	2.159	0.03	0.762	0.007	0.178
E30BU121Z1PX6	6	120	0.03	0.762	0.125	3.175	0.03	0.762	0.007	0.178
E40BU151Z1PX3	3	150	0.04	1.016	0.065	1.651	0.04	1.016	0.007	0.178
E40BU151Z1PX4	4	150	0.04	1.016	0.085	2.159	0.04	1.016	0.007	0.178
E40BU151Z1PX6	6	150	0.04	1.016	0.125	3.175	0.04	1.016	0.007	0.178

*Custom Solutions are available; however additional tooling costs may apply. Please contact an inside sales representative for more information.



Bar Cap®



25 Volt, Ultra High K, UX Dielectric Bar Cap® Options

Part Number	Number Of Caps	W Width		L Length		Capacitance Range (Min/Max) Thickness		
		Inches	mm	Inches	mm	0.005"	0.010"	0.015"
		(±0.003")	(±0.076")	(±0.005")	(±0.127")			
E20UX ___ Z2MX	3	0.020"	0.508	0.065"	1.651	400	210	150
	4	0.020"	0.508	0.085"	2.159			
	6	0.020"	0.508	0.125"	3.175			
E25UX ___ Z2MX	3	0.025"	0.635	0.065"	1.651	500	270	180
	4	0.025"	0.635	0.085"	2.159			
	6	0.025"	0.635	0.125"	3.175			
E30UX ___ Z2MX	3	0.030"	0.762	0.065"	1.651	600	320	220
	4	0.030"	0.762	0.085"	2.159			
	6	0.030"	0.762	0.125"	3.175			
E40UX ___ Z2MX	3	0.040"	1.016	0.065"	1.651	810	430	300
	4	0.040"	1.016	0.085"	2.159			
	6	0.040"	1.016	0.125"	3.175			

Part Number Identification

E	40	BU	151	Z	1	P	X	4	
Product E = Bar Capacitors	Width 20 25 30 40	Material See material tables on page 5.	Capacitance (pF) Per Pad 800 = 80 pF 101 = 100 pF 121 = 120 pF 151 = 150 pF Consult an inside sales rep. for custom solutions.	Tolerance Z = +80% -20%	Voltage 2 = 25V 1 = 100V	Termination P = Ni / Au M = Au	Test Level Y or X See test level definitions on page 7.	Capacitor Quantity In mils 3 4 6 Etc.	Packaging D = Black Dotted E = Repopulated T = Tape and Reel Leave blank for generic waffle pack. See packaging definitions on page 32.