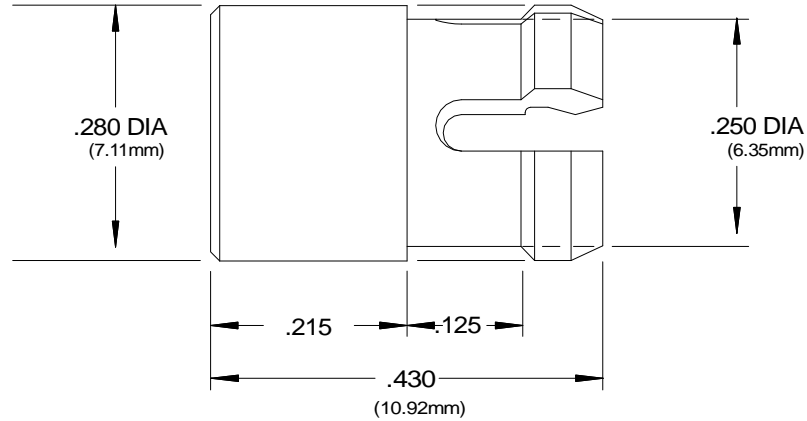
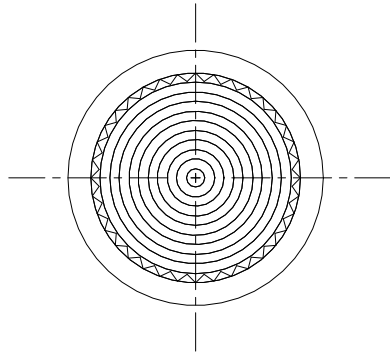




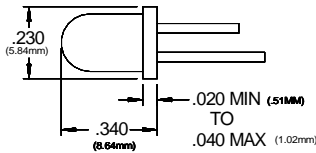
ACTUAL SIZE



APPROVAL

DATE

RECOMMENDED LED  
SIZE T-1 3/4 (5MM)



ORDERING CODES

MODEL CLF 280 RTP  
COLOR \_\_\_\_\_

RTP Red Transparent    BTP Blue Transparent  
ATP Amber Transparent    YTP Yellow Transparent  
GTP Green Transparent    CTP Clear Transparent  
GLO White Translucent

**NEW**

NOTES:

MATERIAL: Polycarbonate  
GLO Series - Polycarbonate/Acrylic blend

DESIGN: High profile lens using Fresnel rings.

MOUNTING: Mounts through the front of panel.  
Mounting holes should be deburred but not chamfered.  
Hole size .250" ±.002 (6.35mm) on 3/8" centers  
Panel thickness 1/16" to 1/8".

For panels less than 3/16", spacer SPC 125 is available.

U.S. & Foreign Pat. Issued & Pend.

TOLERANCES (EXCEPT AS NOTED)		REVISIONS				VCC P/N: CLIPLITE® CLF 280			
DECIMAL	NO.	DESCRIPTION	DATE	BY					
±.010	1	Add GLO Series	1/6/09	JG					
ANGLE	2								
± 30'									
DIAMETER	3								
.003 TIR									
RADII	4				DRAWN BY	DATE	DRAWING NO.	REV.	
.008 Max	5				JMS	10/25/85	CLF280A	1	
					CHKD	SCALE 5 X			



VISUAL COMMUNICATIONS COMPANY, INC.  
190 Bosstick Blvd, Ste. 101 San Marcos, California 92069 U.S.A.  
Phone: (760) 560-1300; Fax: (760) 560-1301; e-mail: vccsales@vcclite.com