

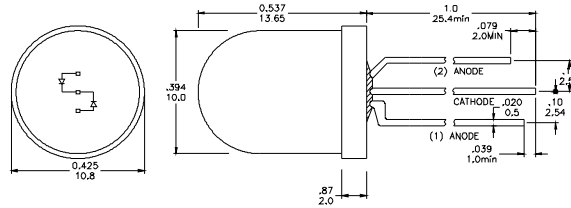
BI-COLOR LED LAMP

VAOB-10GADE2-C

Feature

- Low Power Consumption
- High Intensity
- I.C. compatible

Package Dimension



Applications

- Commercial Outdoor Sign Board
- Front Panel Indicator
- Backlight

Description

- The (1)Red and (2)Green Chips are Matched For uniform Light Output
- Diffusion Lens

* Tolerance : $\pm \frac{0.01}{0.25}$ Unit : $\pm \frac{\text{inch}}{\text{mm}}$

Absolute Maximum Ratings at Ta = 25°C

| Symbol | Parameter | Max. | Unit |
|--------|---------------------------------------|---------------|---------|
| PD | Power Dissipation | 100 | mW |
| VR | Reverse Voltage | 5 | V |
| IAF | Average Forward Current | 30 | mA |
| IPF | Peak Forward Current (Duty=0.1, 1kHz) | 100 | mA |
| — | Derating Linear Form 25°C | 0.4 | mA / °C |
| Topr | Operating Temperature Range | - 40 to + 80 | °C |
| Tstg | Storage Temperature Range | - 40 to + 100 | °C |

Lead Soldering Temperature [1.6mm (0.063inch) From Body] 260°C For 5 Seconds.

Electrical / Optical Characteristics and Curves at Ta = 25°C

| Symbol | Parameter | Test Condition | Min. | Typ. | Max. | Unit | |
|--------|---------------------|----------------|------|------|------|------|------|
| VF | Forward Voltage | IF = 20 mA | R | | 2.1 | 2.3 | V |
| | | | G | | 2.0 | 2.3 | |
| IR | Reverse Current | VR = 5 V | | | 50 | μA | |
| IV | Luminous Intensity | IF = 20 mA | R | | 100 | | mcd. |
| | | | G | | 80 | | |
| λd | Dominant Wavelength | IF = 20 mA | R | | 640 | | nm |
| | | | G | | 570 | | |