

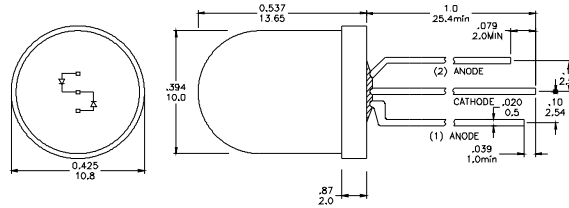
BI-COLOR LED LAMP

VAOB-10GCDE2-C

Feature

- Low Power Consumption
- High Intensity
- I.C. compatible

Package Dimension



Applications

- Commercial Outdoor Sign Board
- Front Panel Indicator
- Backlight

Description

- The (1)Yellow and (2)Green Chips are Matched For uniform Light Output
- Diffusion Lens

* Tolerance : $\pm \frac{0.01}{0.25}$ Unit : $\pm \frac{\text{inch}}{\text{mm}}$

Absolute Maximum Ratings at Ta = 25°C

Symbol	Parameter	Max.	Unit
PD	Power Dissipation	100	mW
VR	Reverse Voltage	5	V
IAF	Average Forward Current	30	mA
IPF	Peak Forward Current (Duty=0.1, 1kHz)	100	mA
—	Derating Linear Form 25°C	0.4	mA / °C
Topr	Operating Temperature Range	- 40 to + 80	°C
Tstg	Storage Temperature Range	- 40 to + 100	°C

Lead Soldering Temperature [1.6mm (0.063inch) From Body] 260°C For 5 Seconds.

Electrical / Optical Characteristics and Curves at Ta = 25°C

Symbol	Parameter	Test Condition	Min.	Typ.	Max.	Unit	
VF	Forward Voltage	IF = 20 mA	Y		2.0	2.4	V
			G		2.0	2.5	
IR	Reverse Current	VR = 5 V			50	μA	
IV	Luminous Intensity	IF = 20 mA	Y		90	mcd.	
			G		80		
λd	Dominant Wavelength	IF = 20 mA	Y		590	nm	
			G		570		