

MechaTronix in LED

ModuLED Giga-HBG High Bay LED Cooler ø152mm with driver connection system



Mounting Options

External driver box connection option



MechaTronix was formed in 2007, comprised of five already successful manufacturing companies, with each of them in excess of a decade of continuous operation. MechaTronix provides a wide variety of mechanical and electromechanical parts as well as assemblies for the international Original Equipment Manufacturers market.

Mounting indicator marks overview

The CoolBox driver box design keeps automatically the necessary space towards the LED cooler, so free air convection will not be blocked - no extra spacer needed.



MechaTronix driver box

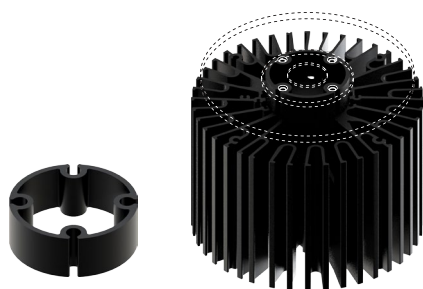
This universal driver box is designed in this way that almost all drivers available in the market up to 160 Watt can be mounted inside without the need of drilling or mechanical adaptations. The universal drivers clamping fixation also creates the perfect locking of your driver towards the top shell, so conduction can easily occur and convection towards the outside will guarantee the driver to keep within temperature specs.

Model Names

- CoolBox
Universal driver box for ModuLED and CoolBay® high bay LED coolers

Mounting

- Direct mounting on the LED cooler with 4 screws M5 x 10mm
Orange indicator marks



MechaTronix driver box connector ring

The driver box connector ring guarantees you the ideal space between the ModuLED LED cooler and your external driver box. With its open structure and aluminium conductivity, this is the ideal bridge between any driver box in the market and our high bay coolers.

Model Names

- Driver box connector ring

Mounting

- Direct mounting on the LED cooler with 4 screws M5 x 30mm
Orange indicator marks