

INTERFACE UNIT

LI Series – Liquid level Sensor Interface

LI-08/B

Design Features

- Complete isolation between the sensor and the control circuitry
- Reduces cycling on/off - due to turbulence delay circuitry
- 8 amp SPDT switching capability

Product Comments

- Interface unit connecting the Sensor to the Control Circuit
- Isolated circuitry - low volts circuit to the sensor - mains to control
- In built delay circuitry - 10 seconds typically

Typical Applications

- Central Heating Systems
- Circulating Pump Protection
- Cooling systems

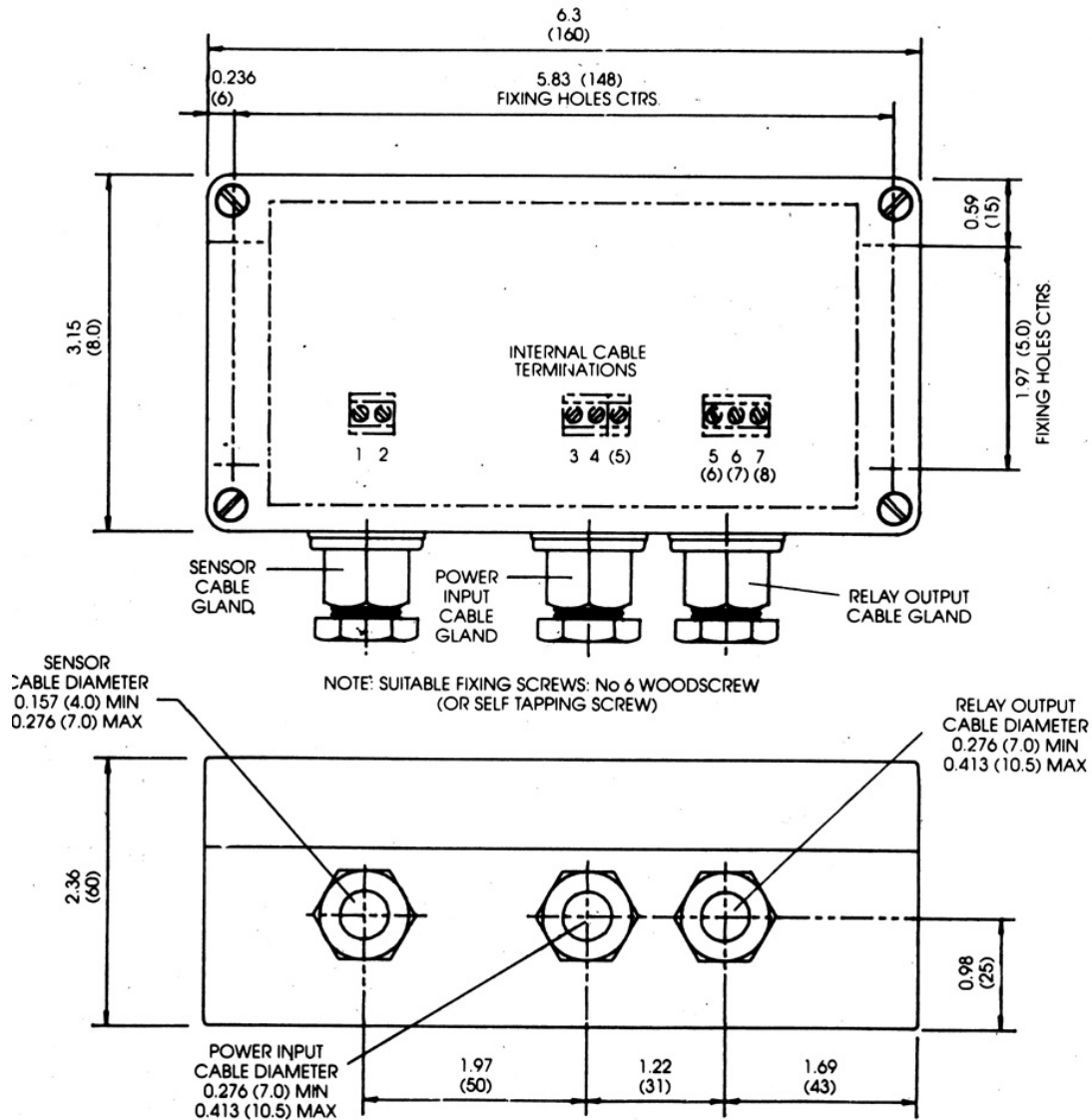


Material, Design and Operation

Contact Form:	Form C - SPDT
Maximum Switching Volts:	250 VAC or 200VDC
Maximum Switching Current:	8 Amps
Housing Material:	Polycarbonate
Relay Output Contact:	Single Pole Double Throw
Relay Contact Rating:	8 Amps
Time delay:	10 seconds
Circuitry:	meets BS5420/IEC144
Polycarbonate Box	to IP65 with cable glands
Cable Glands	sealed to IP65

Line Drawing

LI-08/B



Dimensions are in inches (millimetres).
Do not scale drawings.